

Test: Primary 3 - Term 1 (CA1) Science (Pei Hwa)

Points: 12 points

Name: _____

Score: _____

Date: _____

Signature: _____

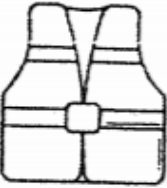





Select multiple choice answers with a cross or tick:

Only select one answer

Can select multiple answers

For each question, from 1 to 6, four options are given. One of them is correct. (12 marks)

The table below shows how some things are classified based on a certain property.

Group A	Group B
 <p>Life vest</p>  <p>Plastic spoons</p>  <p>Wooden ruler</p>	 <p>Ceramic knife</p>  <p>Metal key</p>  <p>Metal nail clipper</p>

How is the property in Group A different from that in Group B?

	Group A	Group B
(1)	Float	Sink
(2)	Stiff	Flexible
(3)	Absorbs water	Cannot absorb water
(4)	Allow little light to pass through	Allow most light to pass through

- A) Option 1
- B) Option 2
- C) Option 3
- D) Option 4

Question 2 of 15

Primary 3 Science (Term 1)

2 pts

Which material(s) would be most suitable for making chopsticks for young children?

- A Paper
- B Wood
- C Glass
- D Plastic

-
- A) Paper
 - B) Wood
 - C) Glass
 - D) Plastic

Question 3 of 15

Primary 3 Science (Term 1)

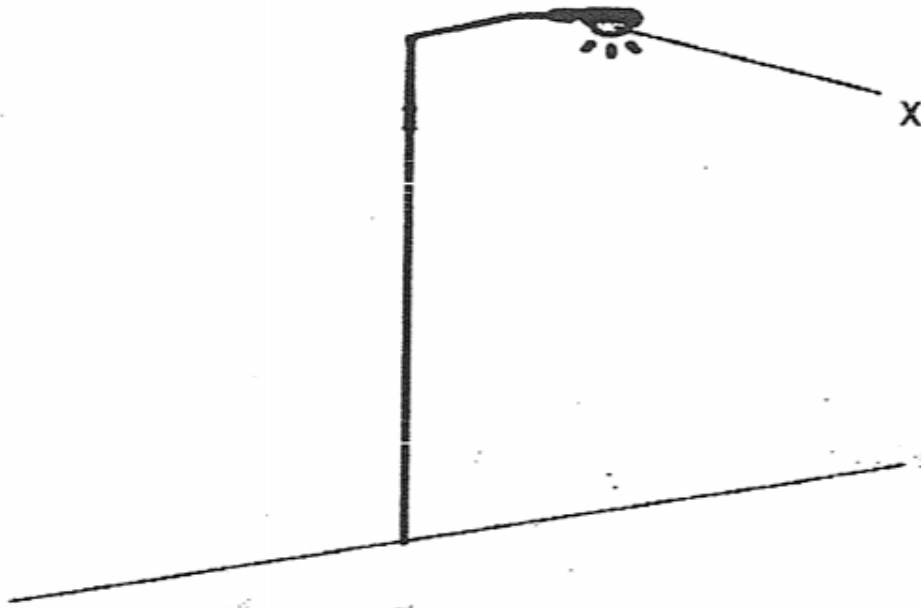
2 pts

Which of the following are parts of a plant system?

- A Stem
- B Roots
- C Fungi
- D Leaves

-
- A) A and B only
 - B) A, B and D only
 - C) B, C and D only
 - D) A, B, C and D

Lamp posts on the streets light the way in the late evening and at night.

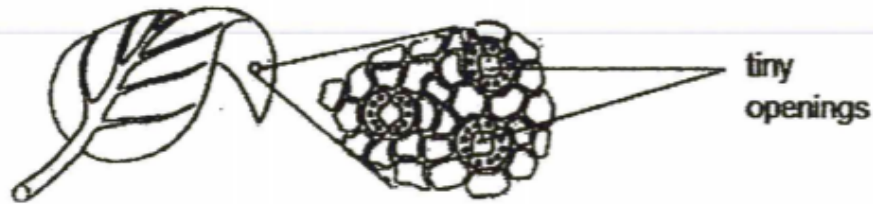


Which of the following shows the correct properties of the material used to make part 'X' of the lamp post?

	Waterproof	Allows most light to pass through
(1)	No	Yes
(2)	Yes	Yes
(3)	No	No
(4)	Yes	No

- A) Option 1
- B) Option 2
- C) Option 3
- D) Option 4

Study the diagram carefully.



The purpose of the tiny openings on the leaves is to _____.

- A) trap light energy from the sun.
- B) support the stem to stay upright.
- C) help to take in and give out gases.
- D) absorb water and minerals for the plant.

Which of the following statements about plants is not true?

- A) All plants bear fruits.
- B) Most plants have leaves.
- C) Some plants produce flowers.
- D) Plants can be classified into flowering and non-flowering plants.

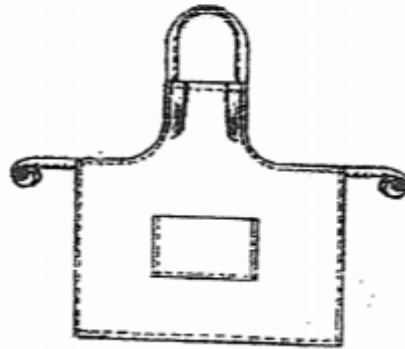
Question 7 of 15

Primary 3 Science (Term 1) 0 pts

Following questions are designed for extended answers that parent/ teacher will have to assign and guide child to attempt after the test has been completed.

Grading: This question type is not graded on this system and will not affect the final score as it was designed in such a way that it requires manual assistance.

An apron is wrapped over the front of our clothes.

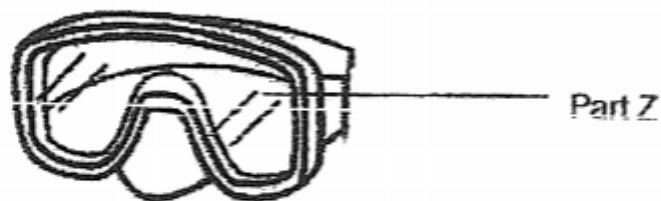


Identify the two properties of materials that have to be taken into consideration when selecting the material to make an apron for **kitchen use**.

Question 8 of 15

Primary 3 Science (Term 1) 0 pts

John has a pair of diving goggles as shown below.



Suggest a suitable material for Part Z and give a reason for the choice of the material, in terms of its property and its use.

Question 9 of 15

Primary 3 Science (Term 1) 0 pts

Mike wants to find out which material A, B, C or D is most suitable to make into a toy penguin for children to play with during bath time. The results of his experiment are shown below. A tick (✓) shows that the material has the property and a cross (X) shows that the material does not have the property.

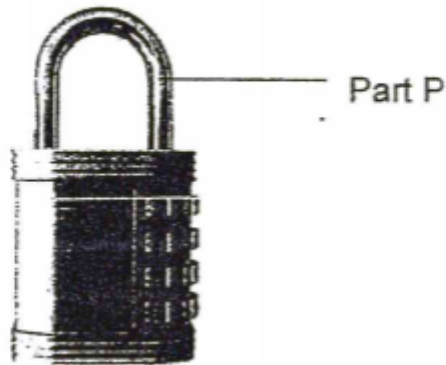
Property	Material			
	A	B	C	D
Sinks in water	✓	X	X	X
Waterproof	✓	✓	✓	X
Flexible	X	✓	X	✓
Strength	✓	✓	X	✓

Based on the results shown in the table above, which of the materials A, B, C or D is most suitable to make the toy penguin?

Question 10 of 15

Primary 3 Science (Term 1) 0 pts

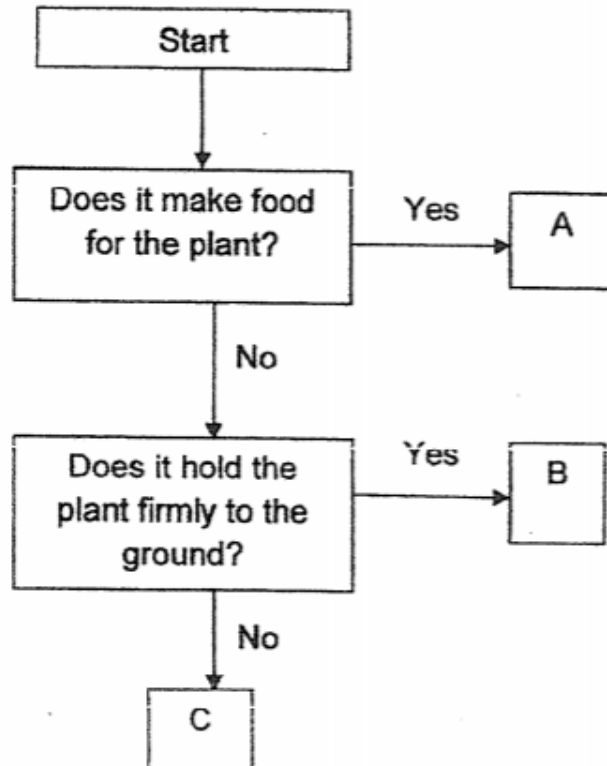
The diagram below shows a metal lock used to lock the lockers.



Based on the results in the table (refer to previous question), which material, A, B, C or D, is most suitable for making part P?

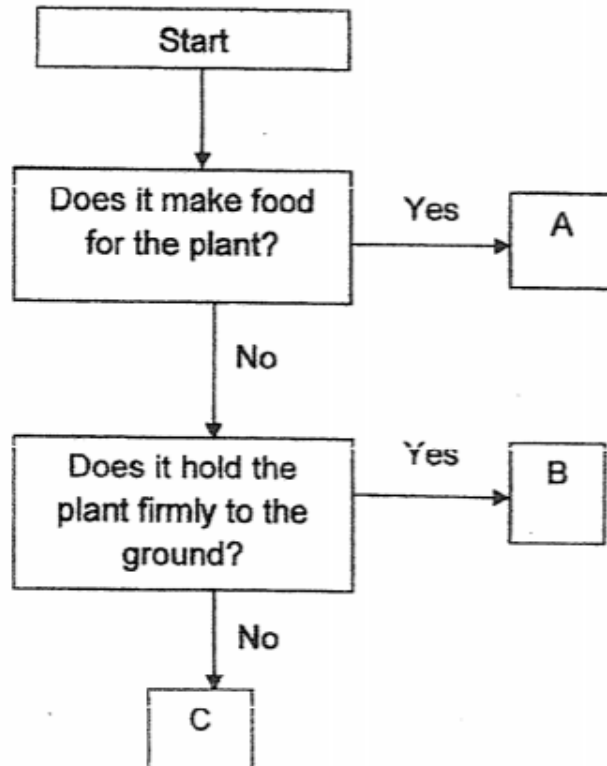
What properties in the table (refer to previous question) show that the material chosen is most suitable?

The flow chart shows the different main functions of 3 different plant parts, leaves, roots and stem.



Which part, A, B or C shows the function of the leaves of the plant?

The flow chart shows the different main functions of 3 different plant parts, leaves, roots and stem.

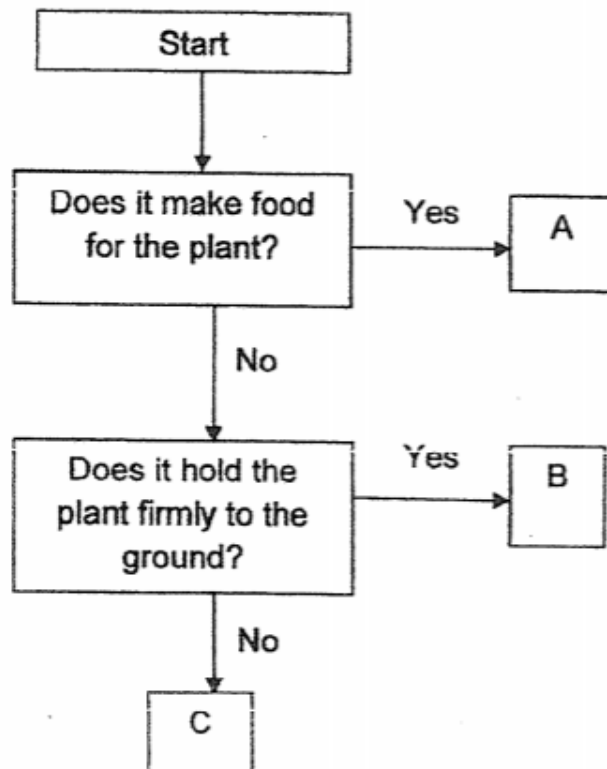


State the plant parts for B.

Question 13 of 15

Primary 3 Science (Term 1) 0 pts

The flow chart shows the different main functions of 3 different plant parts, leaves, roots and stem.



State the plant parts for C.

Question 14 of 15

Primary 3 Science (Term 1) 0 pts

James found some seeds from a plant. He told his classmate, Kent, that all plants grow from seeds. Kent said that he was wrong.

Other than reproducing from seeds, what is another way that plants can reproduce from?

Question 15 of 15

Primary 3 Science (Term 1) 0 pts

Give an example of a plant that reproduce the same way as in the previous question.
